



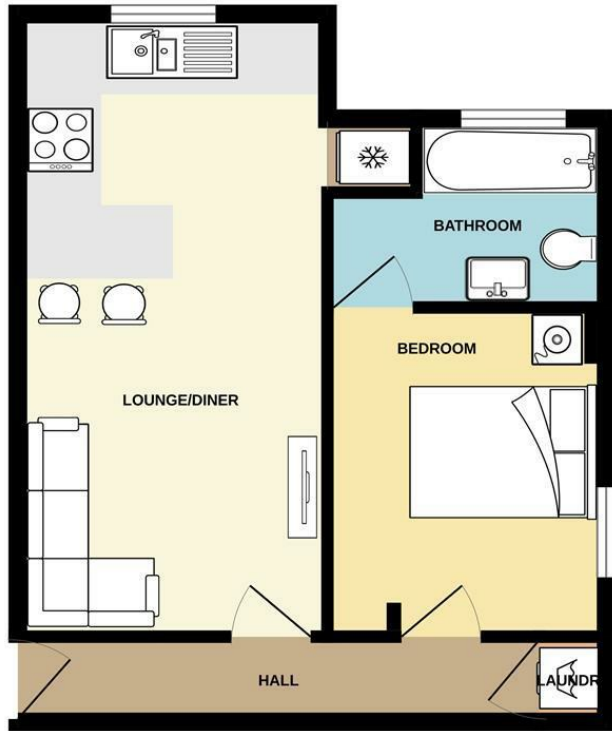
**1 Bed
Apartment
located in West
Didsbury**

£1,125 PCM



**STANTON
PROPERTIES**

GROUND FLOOR
382 sq.ft. (35.5 sq.m.) approx.



DIRECTIONS


CONTACT

31 Barlow Moor Road
Didsbury
Manchester
M20 6TW

E: office@stantonproperties.co.uk
T: 01614345307

TOTAL FLOOR AREA: 382 sq.ft. (35.5 sq.m.) approx.

Whilst every attempt has been made to ensure the accuracy of the floorplan contained here, measurements of doors, windows, rooms and any other items are approximate and no responsibility is taken for any error, omission or mis-statement. This plan is for illustrative purposes only and should be used as such by any prospective purchaser. The services, systems and appliances shown have not been tested and no guarantee as to their operability or efficiency can be given.
Made with Metropix ©2026

Energy Efficiency Rating		
	Current	Potential
Very energy efficient - lower running costs		
(92 plus) A		
(81-91) B		
(69-80) C	80	80
(55-68) D		
(39-54) E		
(21-38) F		
(1-20) G		
Not energy efficient - higher running costs		
EU Directive 2002/91/EC 		
England & Wales		

STANTON
PROPERTIES